



ON-LINE AUCTION SALE

Equipment formerly used by
Multishape Metalcraft Limited (in Liquidation)



ON-LINE AUCTION DATE: THURSDAY 7th MARCH 2024



VIEWING: TUESDAY 5th MARCH 2024
- by appointment only

**AT: The Works, 120 Camford Way, Luton,
Bedfordshire, LU3 3AN**

Peaker Pattinson (Auctioneers) Ltd
The Grange Offices, Aunby, Stamford, Lincs, PE9 4EE England
Tel: +44 (0)1778 590111 Fax: +44 (0)1778 590730 Email: info@ppauctions.com



www.ppauctions.com



ON-LINE AUCTION

Sheet Metal / Welding

Amada Fanuc AF2000C CNC laser, Fanuc series 160i-L control, type A04B-0813-B311, Lasmac LC-1212, 3.3kW laser (1999), light guards with DCE Unicell dust extraction (2000)

Amada Arcade 212 200kN CNC turret punch, 28 station turret, Fanuc control with tooling (1995)

Safan type VS255-4 hydraulic guillotine, 2550x4mm capacity, auto back gauge, front supports

Warcom Unica 125-30 125 ton x 3000mm CNC pressbrake, light guards, Kletra 20550V control (1996)



Mebusa PH65/25 65 ton x 2500mm pressbrake, Autobend 5C control

Mebusa 30-12-A 30 ton x 1200mm upstroking pressbrake, Autobend 7 control

(1994)

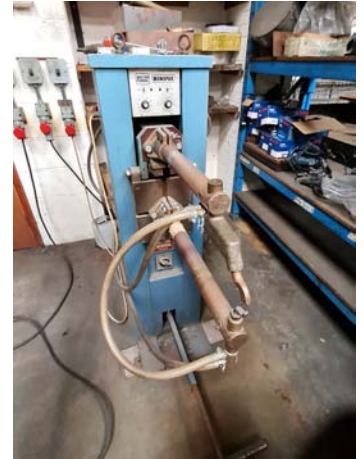


**CONTACT THE AUCTIONEERS TO
REQUEST A CATALOGUE / AUCTION VIEWING**

ON-LINE AUCTION

Sheet Metal / Welding Continued

Qty various pressbrake tooling. HMW 818 corner notcher, 8" capacity, T slotted table, foot pedal. Edwards 6ft initial pinch manual rolls, 4" rolls
2000x1250mm metal welding bench & 2x similar metal work tables
Nederman wall mounted fume extraction unit, 0.37kW, flexible arm (1994)
Kempi Kempotig AC/DC 250 welder, 250A with WU10 wire feed unit
Aga Mig 200B welder with CW6B wire feed unit
British Federal WPI 25kva spot welder, 600mm throat, Monopak control / timer
S&B flypress on bench. Norton 6DB flypress on steel stand



Machine Tools / Small Tooling / Inspection

Corona 4 spindle in line drill, 36x12" bed, belt heads
Draper D16/16 single spindle bench drill, 210-3340rpm,
300mm dia RF table, 240v
Grinding Master 2000 type GR-2100-90 through feed belt
sander, 900mm max width with JB Thorne non-flammable
4kW dust extractor & spare belts (1998)



**CONTACT THE AUCTIONEERS TO REQUEST A
CATALOGUE / AUCTION VIEWING**

ON-LINE AUCTION

Machine Tools / Small Tooling / Inspection Continued

Vanco Flexiband model 1 vertical linisher, 240x200mm table

Kepp 150-2000 belt grinder, 3000-3400rpm, 150mm wide capacity. Bench mounted punch grinder

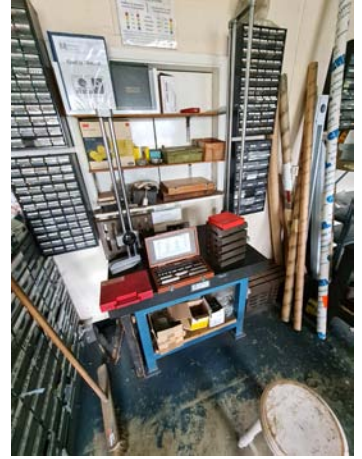
Sealey BG150CX 150mm DE bench grinder, 240v, 150W (2018)

Macc New315 EDV pull down chop saw, 260mm blade (2004)

Small tooling inc: vices, drills, clamps etc

900x600mm granite grade 2 surface table

Inspection inc: height gauges, blocks, slip gauges, marking stamps, verniers, micrometers etc



Factory Plant / Miscellaneous

Jungheinrich EFG-DF 15 SP GE 120-400 2T 1500kg electric 3 wheel forklift truck, 4000mm lift height, double stage mast, sideshift with charger (2003)

Abac Genesis 11 270 air compressor on air receiver, 11kW, 7bar working, 13 bar max (2013)

Pemsarter Series 4 6 ton press / inserter on table, 460mm throat, foot pedal,

Pemsarter Series 2000 press / inserter with rotary bowl feeder, 600mm throat

Studfast System 8CD & CDM9 stud welders



**CONTACT THE AUCTIONEERS TO
REQUEST A CATALOGUE / AUCTION VIEWING**



MORE EQUIPMENT STILL BEING LOTTED - CONTACT THE AUCTIONEERS FOR FURTHER DETAILS

ON-LINE AUCTION

Factory Plant / Miscellaneous Continued

2x 3m beam mounted swing jibs with PCL pneumatic retractable air lines

Sen-Vac predryer wet vacuum, 240v

Storage cabinets with contents inc: nuts, bolts, washers etc

Boltless pallet racking, trolleys, stillages, tressels etc

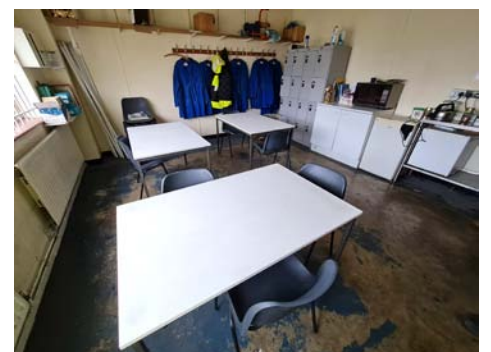
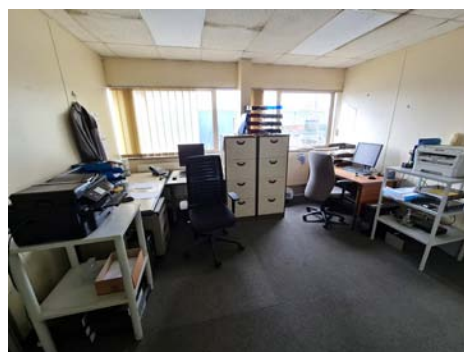
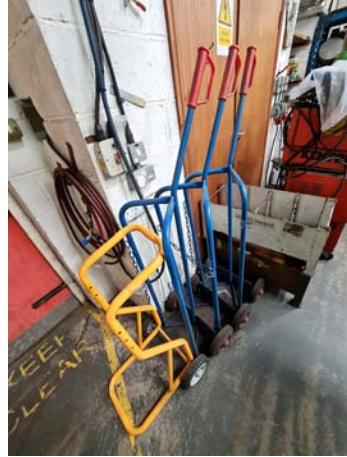
Canteen tables, personnel lockers, office tables, chairs, cupboards, filing cabinets etc

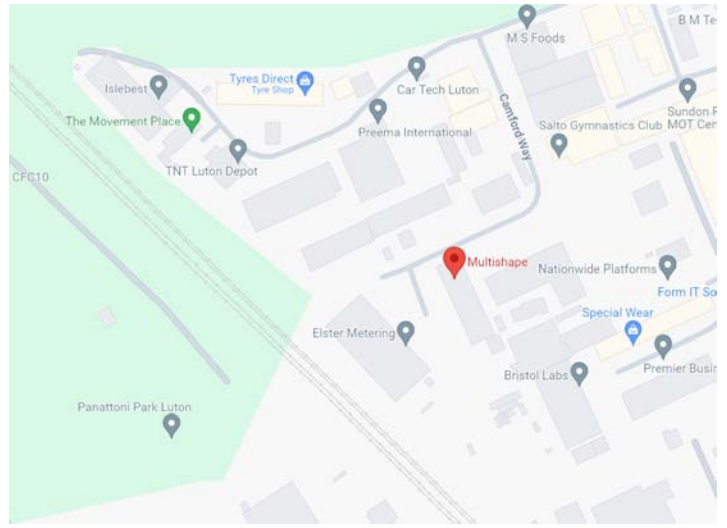
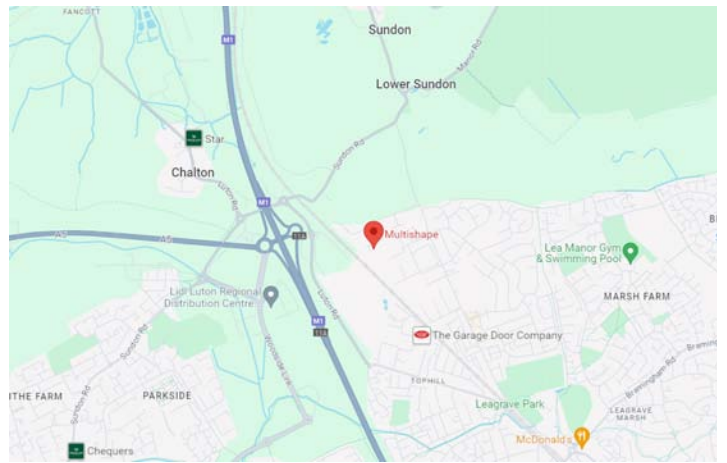
Bosch etc power tools, welding screens & masks, gas factory heaters, scales etc

Karcher 6.85 pressure washer, safety steps, step ladder etc

Qty acrylic sheets, metal tubes etc, bar stock, racking, wooden boards etc

Large Qty production sheeting inc: CR4, Zintec, galvanised, stainless, aluminium etc





Airport:
Luton (11 miles)

Railway Station:
(6 miles)

Hotels:
Premier Inn Dunstable / Luton hotel
+44 (0) 333 777 4663
Hilton Garden Inn Luton North
+44 (0) 1582 435300
Flitwick Manor Hotel - Best Western
+44 (0) 330 028 3406

VIEWING: TUESDAY 5th MARCH 2024
- by appointment only

At: The Works, 120 Camford Way,
Luton, LU3 3AN, Bedfordshire



Buyers premium of 15.5% + VAT (at current UK rate) **will be charged in addition on all lots**
(Exported items: Applicable VAT may be refunded on production of satisfactory shipping documents)

PHOTOGRAPHIC IDENTITY WILL BE REQUIRED FOR VIEWING
Peaker Pattinson (Auctioneers) Ltd reserve the right to sell equipment prior to the sale.

PLEASE NOTE: ACCEPTANCE OF OFFERS AND SUITABILITY OF PURCHASERS FOR SOME OR ALL OF THE EQUIPMENT IS AT THE EXCLUSIVE DISCRETION OF THE VENDORS.

IMPORTANT NOTE:
All information supplied by the auctioneer in promotional material, catalogues etc. is provided in good faith but may not be correct. No liability is accepted by the auctioneer or their Clients for incorrect information and it is the responsibility of the purchaser to satisfy themselves by physical inspection with regard to: General description, measurement, location, age, general conditions, environmental or health and safety conditions, removal requirements etc.
All purchasers who do not inspect are deemed to have waived the right to this facility and all sales are deemed to be 'as inspected' and 'as is, in situ.'
Any bid is accepted on the above basis only and all terms are governed by English law.

Peaker Pattinson (Auctioneers) Ltd
The Grange Offices, Aunby, Stamford, Lincs, PE9 4EE England
Tel: +44 (0)1778 590111 Fax: +44 (0)1778 590730 Email: info@ppauctions.com



www.ppauctions.com

